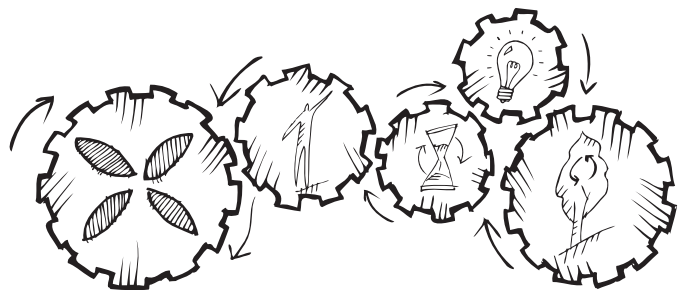


ESSENZA





‘

Manifesto

We put people and their **well-being** at the centre of what we do, stimulating their senses to bring about joy in everyday activities.

We design kitchens made to last generations, kitchens that are **timeless** and impervious to trends.

We transform cooking into an extraordinary experience through the constant **innovation** of forms and materials.

We use our planet's resources in a responsible way, focusing on **sustainability** and respecting nature.

,

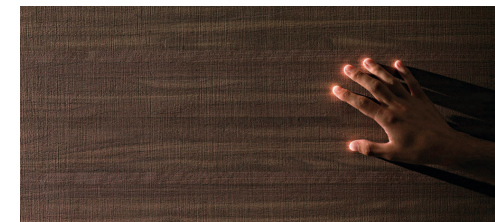
Our values

Well-being



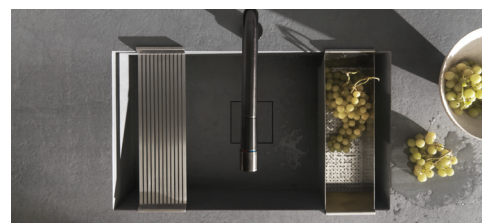
Ergonomics

Heights and depths are designed according to user's specific requirements.



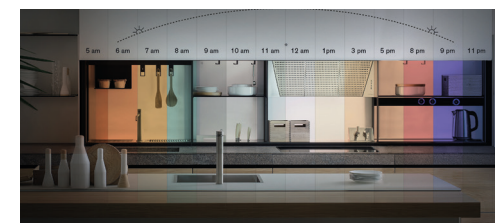
Sensoriality of materials

Tactile perceptions reveal ancient, protective and reassuring emotions.



Health and non-toxicity

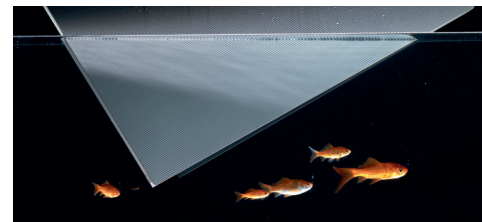
Surfaces do not contain toxic or harmful elements to humans and to the environment.



A feeling of freedom

Innovative elements provide utmost comfort, freedom of vision and movement.

Timelessness



Durability

Ongoing quality and technical tests ensure the highest resistance standard.



Design beyond trends

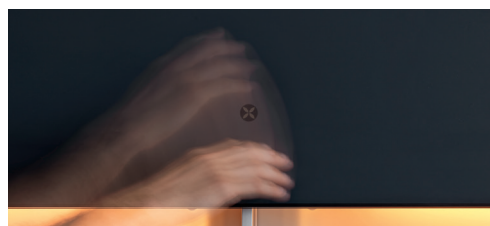
Beauty and functionality go beyond time and fashion trends.

Innovation



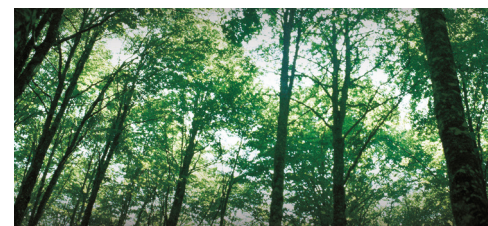
Innovative materials

The ongoing research guarantees the best quality and aesthetics.



Functional revolution

Cutting-edge solutions offer users unique functionalities and new experiences.



In harmony with the environment

The respect of the uniqueness of our planet reflects into a more aware and responsible manufacturing culture.

Sustainability



Dematerialization

Without compromising on their solidity, the structures are broken down to the essentials.



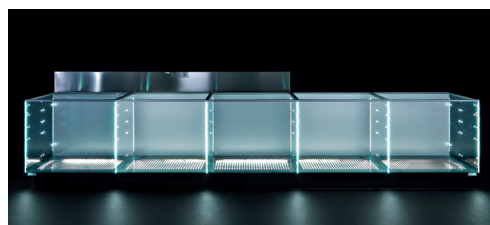
Recyclability

The design is based on recyclable materials and components that can be easily separated at the end of their lifecycle.



Circular economy

The design comes from a long-term perspective and on a more respectful use of resources.



Environmentally-conscious materials

A rational use of materials reduces waste and harmful emissions that generate during manufacturing procedures.



Riciclantica

The extreme synthesis of dematerialisation

The slimmest, lightest door in the world - which is just 2 mm thick - is applied to a water, steam and heat resistant aluminium frame.

The top edge of the aesthetic panel is brought to its essentials, allowing to see first hand the search of dematerialisation. The soft grip is ensured by a new silicone gasket designed to offer greater ergonomics.

Made by adopting the construction technologies typical of the automobile industry, it's the most advanced way to express the form of lightness.



Design Gabriele Centazzo



Adaptable, flexible solutions allow you to organise drawer and jumbo drawer interiors in a convenient way.



The 2 mm thickness of the door demands ultra-slim materials.

NEW



Riciclantica island in Bronze Structured Aluminium paired with tower units in Black Matt Ribbed Laminate.

Riciclantica Outline

The beauty of a protected edge

Valcucine's sophisticated technology gives rise to a straight, terse profile that runs along the edges of the kitchen and becomes the distinguishing element of the arrangement.

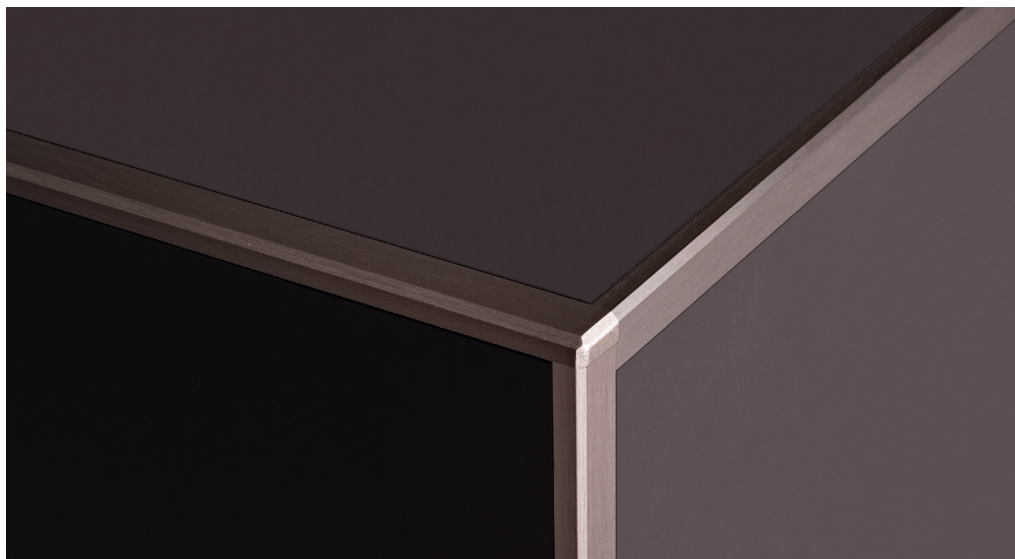
Formal perfection combines with practicality of use: the protected edge strengthens materials while increasing their resistance.

The grip recesses, Riciclantica's hallmark, cut across base unit surfaces, setting off the result of our pursuit of utmost dematerialisation, letting you perceive the extreme slimness - only 2 mm - of the lightest door in the world.

This model's pure lines can be enhanced by matching the door, top and side panel finishes. A stylistic choice that makes it possible to create a unit finished in a single material, for perfectly clean visual results.



Design Gabriele Centazzo



Detail of the Titanium Anodised Aluminium profile.



Riciclantica Soft Outline island in Spicy Chocolate Silk-effect Laminated and Titanium Anodised Aluminium profile. Hung version shelving system with integrated hood.



Riciclantica Soft Outline island in Spicy Chocolate Silk-effect Laminate and Titanium Anodised Aluminium profile. Hung version shelving system with integrated hood.



Wall composition in River Stone Grey Silk-effect Laminate with backlit Aeries wall unit in Smoky Grey Vitrum Velato.

Artematica

The art of pure volumes

Artematica is an iconic Valcucine model produced in 1988 and continuously updated ever since. Thanks to its very innovative contents, it has become a fully-fledged part of the history of design.

This project is a perfect balance between “Art”, i.e. the pursuit of beauty, harmony, form and proportions, and “Mathematics” in terms of rationality, precision and technology.



Design Gabriele Centazzo



Integrated sink in Antalya Grey Marble.



Artematica door and Floating Top in Antalya Grey Marble. The precious detail of the Natural Brass “gap” transmits a refined feeling of lightness.



Artematica island with base units and Floating Top in Antalya Grey Marble, base units and Linea Top in Gloss Cold Grey Vitrum paired with tower units in Distressed Brass.

Logica Theca H8 back section and the breakfast bar in Antique Oak increase the functionality of the kitchen.

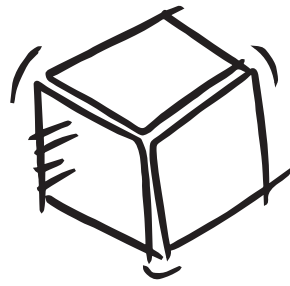
Artematica Soft Outline

Elegantly balanced soft lines and pure volumes

The result of creative research aimed at achieving a pure volume, Artematica Soft Outline looks like a single block in which the top, doors and side panels are integrated in a harmonious whole.

The delicate, curvy line that runs along the edges defines its volume. As well as highlighting the seamlessness of its surfaces, this line compliments the image of the kitchen with refined elegance.

Its clean, minimalist design is the result of advanced creativity and precise and careful processing techniques. Made using cutting-edge technologies, the slim aluminium profiles, available in black, copper and bronze, become stylistic details that add refinement to the arrangement.



Design Gabriele Centazzo



Detail of the Bronze Anodised Aluminium profile.



Detail of the door, a perfect synthesis of aesthetic taste, formal simplicity and technical intelligence.



Artematica Soft Outline island in Matt Green Tea Vitrum and Bronze Anodised Aluminium profile paired with tower units and wall panelling in Warm Black Textile Vitrum.

The glass splash guard and the bamboo Insula breakfast bar complete the composition.

Genius Loci

The hidden drawer inspired by antique secrétaires

A secret, intimate, friendly space.
The ingenious result of dematerialising the worktop, the undercounter drawer becomes the distinguishing trait of the kitchen.

A precious detail that can be customised using various handcrafted finishes and embellishments that integrate perfectly with its pure forms and materials.



Design Gabriele Centazzo



Genius Loci island with base units in Matt Cloud White Vitrum, straight drawer H8 and Linea Top H2 in Cement Tech Ceramic. Equipped bridging frame H48 in Black Anodised Aluminium with splash guard in transparent glass.



Detail of the Cement Tech Ceramic straight drawer H8.



Genius Loci island in Matt Cloud White Vitrum with straight drawer H8 and Linea Top H2 in Cement Tech Ceramic paired with Equipped bridging frame H48 and table in Tactile Elm.

Wall composition with base units in Tactile Elm, straight drawer H8, Linea Top H2 and splashback in Cement Tech Ceramic. Tower units in Matt Cloud White Vitrum.

Forma Mentis

The expressive power of an elementary mark

Extremely pure aesthetics and practicality of use blend in perfect harmony: the shape of the doors with their slanting edges has been designed to offer an easy, handle-less grip.

Metal edge protectors make this kitchen even more durable.



Design Gabriele Centazzo



H6 Slanted Top with Origami breakfast bar in Carnic Grey Marble and support in Burnished Tactile Oak.



Forma Mentis door in Black Silk-effect Angel Skin and H6 Slanted Top in Carnic Grey Marble.



Forma Mentis with base units in Black Silk-effect Angel Skin and H6 Slanted Top paired with Origami breakfast bar in Carnic Grey Marble.

Wall units, tower units, 2 cm wall panelling and shelving system in Burnished Tactile Oak.

Logica Celata

Disappearing scenes

Great aesthetic impact paired with unsurpassable efficiency can be found in the latest evolution of the “Logica” line, the end product of brilliant research into making over space and reinventing ergonomics.

It's available in the Bar, Kitchen - 96/101 and 80 cm deep - and Food Preparation models, each of which contains ideas and accessories purposely-designed to meet specific requirements.

Everything is within reach, ready to be used in the most efficient and practical way. And when you've finished, it is all hidden



Design Gabriele Centazzo

away behind the door that shuts flush with the underlying base units, giving the kitchen its clean and tidy appearance back.

Once shut, Logica Celata turns into an elegant piece of furniture. A very evocative sculptural volume that pairs beauty with functionality.



Logica Celata becomes an elegant piece of furniture that can be further beautified by Vitrum Arte customised surfaces: a special technique developed by Valcucine to manually reproduce inlaid designs on glass.



The door, in Gloss Cloud White Vitrum, shuts flush with the underlying base units, concealing everything from view and instantly creating a tidy look.



The door moves softly upwards to reveal the interior accessories and the whole work area. Everything is close at hand, ready to be used as efficiently and practically as can be.

Special Elements

Functional revolution

Innovation at the service of man, expressing needs that change over time.

Continuous research into improving people's daily interactions with their kitchen has led us to make over spaces and reinvent ergonomics, planning new user experiences through our "Special Elements" range.

Functionality meets beauty and the kitchen turns into a striking setting.



Design Gabriele Centazzo



Weightless lines, suspended shapes and thin volumes characterize Insula breakfast bar.



The shelving system that defines and divides space without closing it is perceived as being extremely light.



New lighting enriches the Aerius wall unit and the equipped splashback.



V-Light

The back panel's changing colours create new settings ranging from the splendours of nature, various degrees of white light, right down to the circadian cycle that automatically recreates the changes that naturally occur in sunlight throughout the day. The background light tunes into and simulates natural light, well aware of how it influences the psychological and physical wellbeing of those who benefit from it.



V-Motion

Unmatchable ergonomics, thanks to an exclusive, automatic, patented system. The kitchen comes to life thanks to the simple gesture of a hand that simultaneously opens the door, rotates the tap and turns the back panel lights on, changing the colours of the luminous backdrop using all V-Light's effects and functions.



Air Logica

The accessorised back panel with its sliding door enables the use of deeper base units. The door glides noiselessly upwards revealing an integrated cooker hood and a light panel at the back which increases visibility on the worktop and conveys a wonderful feeling of space to the entire food preparation area.



New Logica

The upper lift-up doors and the lower, downward-sliding doors open and shut gently to reveal all the accessories of the back panel, a patented element that can be equipped to meet the user's requirements and can even house a cooker hood.

Logica Theca

The evolved version of the back section has now become a storage module with a single door that can be perfectly integrated with the worktop and can hold small utensils, containers and much more.

A light touch of the hand automatically and noiselessly opens the whole door thanks to a brilliant mechanism based on the force of gravity, making its contents fully visible and ensuring immediate access to them.

The inside of this module can be customised by means of a set of accessories designed to meet various requirements.



Aerius wall unit

A touch of the hand and the ultra-slim door opens upwards, like a wing in flight, thanks to the force of gravity exploited by the balancing structure. On the inside, a single side panel leaves more space for storage and provides visual harmony. On the outside, the refined Vitrum Velato finish enhances the light and airy appeal of this cabinet.



Equipped bridging frame

Designed to be added to kitchens with islands or peninsulas, it separates spaces without enclosing them. This element lets people on both sides of the bridging frame interact while creating a refined interplay of volumes consisting of the solid presence of the base units contrasting with the aesthetically light appeal of the structure.

A furnishing element that also creates a practical space, it is available in two heights and, thanks to a rich array of accessories, can be customised to meet the various requirements of specific areas.





Brand of ITALIANCREATIONGROUP

June 2022

Paper: Magno Natural ECF
(Elemental Chlorine Free),
fully recyclable.

Valcucine is entitled to make
modifications and improvements
at any time, even without notice.
All rights are reserved.

Via Luciano Savio, 11
33170 Pordenone, Italy
+39 0434 517911
www.valcucine.com

